

Boutique  
Camping

WHERE WILL YOUR  
ADVENTURE  
TAKE YOU...

INSTRUCTION MANUAL



# LUNA EMPEROR BELL TENT

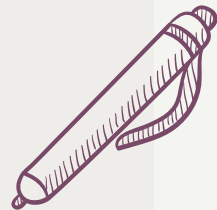


SCAN HERE  
FOR VIDEO  
TUTORIALS!



# COMPONENTS CHECKLIST

- TENT WITH ATTACHED GUY ROPES *and* GROUND SHEET
- TENT BAG
- RUBBER MALLET
- FULL SET OF STEEL PEGS
- X2 CENTRE POLES
- X1 FLEXI DOOR POLE
- X1 CROSS BAR
- X12 WALL POLES (RIBS)
- INSTRUCTION MANUAL
- SPARES BAG



# GETTING TO KNOW YOUR TENT

## FABRIC

Treated with UV, rot and water repelling agent.



## INTEGRATED POLE LOOP

To hang a chandelier, inner tent, lighting or other decor!

SEE MAINTENANCE AND TLC PAGE FOR TIPS ON CLEANING AND RE-PROOFING!

## INTERNAL MESH POCKET

To store small belongings.

MESH VENTS



## PLASTIC LOOPS

To attach an inner tent or hang fairy lights!

## LARGE ROUND MESH WINDOWS

With zippable flaps. New models have ropes to peg down at an angle to redirect rainpour and allow ventilation with privacy.

## WALL RIBBING POLES

For extra structural support.

## ARCHED CANOPY OVERHANG

To shelter doorway and redirect rainpour.

## GUY ROPES

- ✓ Reflective to minimise tripping hazards
- ✓ Adjust via savvy toggles
- ✓ Use rebar pegs (grooved) to secure

## ZIPPABLE GROUND SHEET

If pitching your tent as a stand-alone shelter, unzip the groundsheet AFTER the tent has been erected.

## ENTRANCE POINT

Create a seamless entry and use standard pegs (smooth) to flatten the groundsheet's entrance point.

## ELECTRIC HOOK UP FLAP

Use the savvy zipped-flap to safely thread electrical wires into your tents' living space.

## INSTALLING A STOVE IN YOUR TENT?



SCAN HERE!



STANDARD PEGS (SMOOTH)

REBAR PEGS (GROOVED)



# PLOT PREPARATION + PITCH PERFECTION

---

## ACHIEVING PITCH PERFECTION

---

- ✔ Ensure your plot is flat and bump free, uneven surfaces or hill tops may apply too much uneven tension and result in damage.
- ✔ Avoid pitching your tent under trees unless you have a tent protector cover or shelter.
- ✔ Before securing down the pegs, zip all doors closed.
- ✔ Kinks and creases in the fabric suggest that the tension in the tent is uneven and can result in damage. When pitching your tent, ensure that the poles are straight and guy ropes are adjusted accordingly.
- ✔ The groundsheet zip must be concealed and hidden by the skirt of the tent.

## ONCE IT'S UP..

---

- ✔ Frequently check that the pegs are secured tightly and have not become loose, this is particularly important after wet weather as the grounds will become soft.
- ✔ Air your tent out daily to increase the ventilation. This can be done by opening up the doors and windows.
- ✔ If you spot any marks, dirt or mildew spots, tackle them right away to prevent the issue from staining or spreading.

## WATERPROOFING *and* LEAK PREVENTION

---

On the first occasion that your tent experiences a heavy rainfall, although unlikely, you may find small leaks around the seams of the fabric. Do not worry, as this is normal!

Once it has fully dried out, the cotton will naturally shrink and close any holes to ensure your tent becomes completely watertight.

To completely avoid this when on your camping adventure, you can erect the tent in your garden (if possible) and hose it down with water.





# PITCHING YOUR LUNA EMPEROR BELL TENT

IF THE GROUNDS ARE DRY + YOU ARE STRUGGLING TO HAMMER YOUR PEGS INTO THE GROUND, DRENCH THE DRY AREA WITH WATER FIRST!

TOP TIP!

1



**1A.** UNPACK YOUR TENT + LAY IT OUT WITH THE GROUND SHEET FLOOR FACING.

**1B.** MAKE SURE THE GROUND IS FLAT + FREE FROM SHARP OBJECTS.

**1C.** FIND THE DOOR + ROTATE TO FACE THE DESIRED DIRECTION.

**2A.** KEEPING THE TENT FABRIC ON TOP OF THE BASE, STRETCH THE GROUND SHEET OUT TO AN OVAL SHAPE.

**2B.** LOCATE THE ELASTIC RINGS + THREAD THE STANDARD PEGS (SMOOTH) THROUGH THE RING + THE EYELET TO FIX YOUR BASE TO THE GROUND.

**2C.** MAKE SURE AT EACH ANCHOR POINT, YOU PULL THE GROUND SHEET TIGHT TO AVOID UNEQUAL TENSION AT LATER STAGES.

2



3



**3A.** LOCATE THE CROSS BAR, BRING IT INSIDE THE TENT + STRAP IT TIGHTLY IN PLACE USING THE VELCRO STRAPS.

**4A.** ONCE THE CROSS BAR IS FULLY STRAPPED IN, LOCATE THE X2 CENTRE POLES + BEGIN TO ERECT THE TENT BY PIERCING THE METAL SPIKES THROUGH THE CROSS BAR HOLES.

**4B.** ENSURE THAT THE POLES ARE STRAIGHT + IN LINE WITH EACH OTHER.

**4C.** MAKE SURE THE LOOP ON EACH POLE IS AT THE TOP, YOU CAN USE THIS FOR HANGING AN INNER TENT, CHANDELIER OR SMALL BELONGINGS LATER!

4





# PITCHING YOUR LUNA EMPEROR BELL TENT



5

**5A.** CONNECT TOGETHER EACH RIB (THESE ARE THE ALUMINIUM CURVED POLES BROKEN DOWN INTO X3 PARTS).

**5B.** ONE BY ONE, TAKE EACH ERECTED RIB + INSERT IN TO THE POCKETS LOCATED AT THE TOP END OF EACH WALL SEAM.



6

**6A.** SECURE THE FULL LENGTH OF THE RIB TO THE TENT WALL BY USING THE VELCRO STRAPS TO TIGHTLY HOLD THE RIB INTO POSITION.

**6B.** THIS MUST BE DONE FIRMLY, PARTICULARLY AT THE BOTTOMS.



7

**7A.** THREAD THE FLEXI DOOR POLE THROUGH THE SLEEVE ON THE DOOR CANOPY.

**7B.** THEN, SLOT THE FEET OF THIS POLE INTO THE BLACK POCKETS ON EITHER SIDE OF THE DOOR.



7B

8



**8A.** ZIP THE DOOR CLOSED + LOCATE THE REBAR PEGS (GROOVED.)

**8B.** ONE BY ONE, PULL + PEG DOWN THE GUY ROPES, ANCHORING THEM AT A MINIMUM DISTANCE OF 1M FROM THE TENT + ENSURING THAT THEY ARE ALIGNED WITH THE SEAMS OF THE WALL PANELS.

**8C.** ONCE ALL PEGS ARE DOWN, YOU CAN ADJUST THE GUY ROPES (PARTICULARLY THE MIDDLE ONE) BY USING THE SLIDERS TO CREATE A ROUNDER SHAPE + EQUAL TENSION.

# DRESSING YOUR LUNA EMPEROR BELL TENT

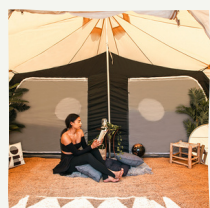
HERE'S SOME INSPO!



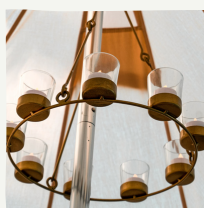
## RECOMMENDED BC ADD-ONS



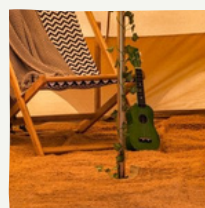
CENTRE POLE TABLE



INNER TENT



CHANDELIER



MATTING



# PACKING AWAY & STORING YOUR TENT

It is VITAL that your tent is only stored once it is bone dry. If you store your tent whilst it's damp or wet, it may be affected by mildew. This can result in deterioration of the tents' fabric.

It's perfectly fine to take down your tent whilst it is still wet. However, you **MUST** ensure to hang it up to dry within 48 hours. This can be achieved by hanging the tent on a washing line, or equivalent, and leaving it to air dry. Separating the groundsheet will speed up this process.

1



- 1A.** REMOVE ALL PEGS. YOU CAN USE YOUR HANDS, A PEG EXTRACTOR OR EVEN ANOTHER PEG.
- 1B.** IF PEGS ARE DIRTY, CLEAN BEFORE PUTTING THEM BACK IN THEIR BAG.
- 1C.** REMOVE POLES FROM THE TENT + IF NECESSARY, ALSO GIVE THEM A CLEAN AND TOWEL DRY.
- 1D.** KEEP THE CANVAS ON TOP OF THE GROUND SHEET + NOT IN CONTACT WITH THE GRASS/GROUND.

**2A.** WITHOUT STANDING ON THE CANVAS, FOLD THEN TENT IN HALF + BACK ON ITSELF.

**2B.** YOUR TENT SHOULD NOW RESEMBLE A HALF MOON SHAPE.

2



3



**3A.** BRING THE CURVED EDGE BACK ON ITSELF SO THAT YOU ARE LEFT WITH A RECTANGLE.

**3B.** THEN, FOLD IT IN HALF LENGTHWAYS.

4



**4A.** SMOOTHING + RELEASING ANY TRAPPED AIR AS YOU GO. BEGIN TO TIGHTLY ROLL THE TENT FORWARDS.

**4B.** ONCE COMPLETED, USE THE STRAPS TO SECURE THE ROLLED UP TENT + PLACE BACK INTO THE PROVIDED TENT BAG.

## STORING YOUR TENT..

Store your tent away in a dry place, free of damp and excessive condensation. We would advise placing it in a high place, away from rodents!





# CLEANING YOUR TENT



To remove any dirt, light marks or mud off your tent you will need to pitch it before cleaning. To tackle marks we advise a sot mop, a soft brush and sponge to apply either:

**'NIKWAX TENT AND GEAR SOLARWASH' OR 'NIKWAX COTTON PROOF'**

...before rinsing off with water.

To remove any dirt, light marks or mud off your tent you will need to pitch it before cleaning. If you're looking to wash the whole tent we advise mixing the cleaning agents above with water in a pump action pressure garden sprayer.

SHOP OUR  
CLEANING  
PRODUCTS



WATCH  
DEMONSTRATION  
VIDEO





# REPROOFING YOUR TENT



Your tent will have a generous coating of our water, rot and UV repelling agent. Over time, as a result of heavy use or testing environments, your tent fabric may require a second coating to revive breathability and resistance to the elements.

This can be done by using a garden spray to apply the following agents:

*'NIKWAX TENT AND GEAR SOLARWASH' OR 'NIKWAX COTTON PROOF'*



READ OUR FULL  
MAINTENANCE  
GUIDE



## RETURNS POLICY

We are certain you are going to love your next tent, however, if you have a change of heart you are entitled to a refund or exchange within 14 days of receiving your item/s. Please note, unpackaged or used tents may be subject to this. To make your request, please complete the online returns form on our website:

[www.boutiquecamping.com/return-form-i524](http://www.boutiquecamping.com/return-form-i524)

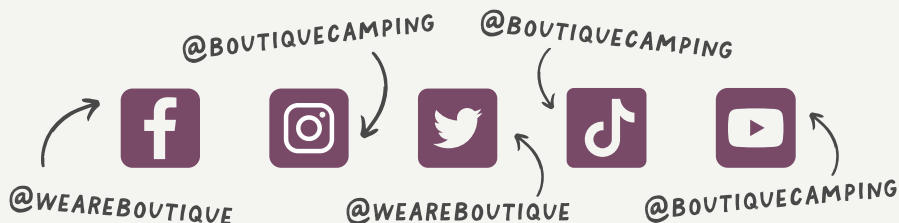
# HAVE A CAMPING QUERY?



EMAIL US:  
[INFO@BOUTIQUECAMPING.COM](mailto:INFO@BOUTIQUECAMPING.COM)  
and WE'LL BE HAPPY TO ASSIST!




## LET'S CONNECT!



We'd love to see where your adventure takes you!

Whether it's a reel, a pitching time lapse, or a stunning setup pic, let us and the world see! Don't forget to give us a follow and TAG us, your creation could be featured on our socials and website!

 [www.boutiquecamping.com](http://www.boutiquecamping.com) | +44 (0) 203 319 1315 | [info@boutiquecamping.com](mailto:info@boutiquecamping.com)

 [www.belltent.com](http://www.belltent.com) | +1(929) 334 3212 | [info@belltent.com](mailto:info@belltent.com)